

2022 School Facilities Inventory Report

Facility Name: **ESSEX WESTFORD EDUCATIONAL COMMUNITY UNIFIED UNION SD | SUMMIT STREET SCHOOL | 17 SUMMIT STREET, ESSEX JUNCTION 5452 - Elementary (PreK**

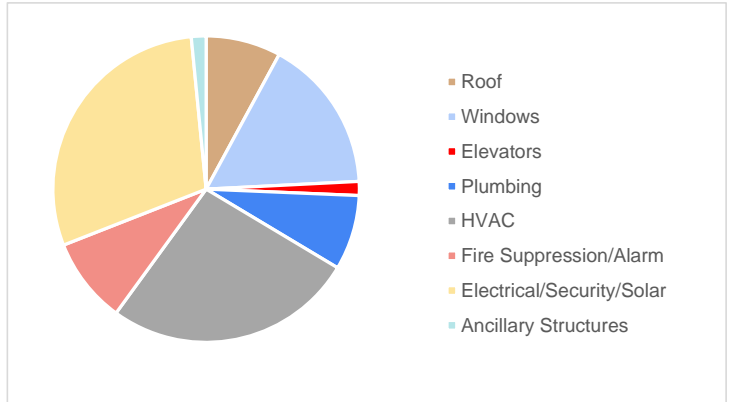
March 29, 2022

Total Value of Assets (Does Not Include Site/Structure/Walls/Interiors) **\$3,393,421**

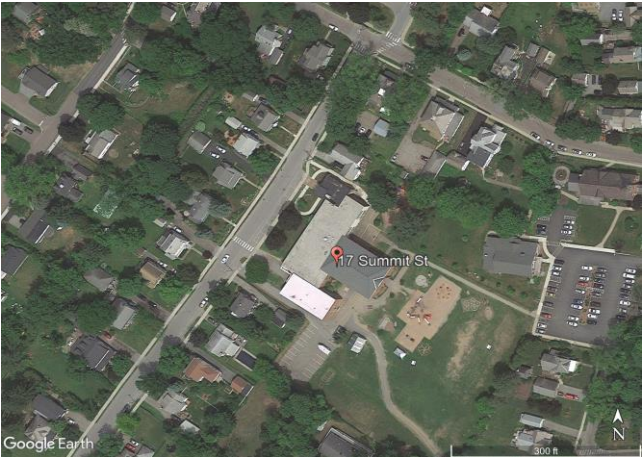


GPS: 44.49351668921041, -73.11361261557167

Relative Asset Values

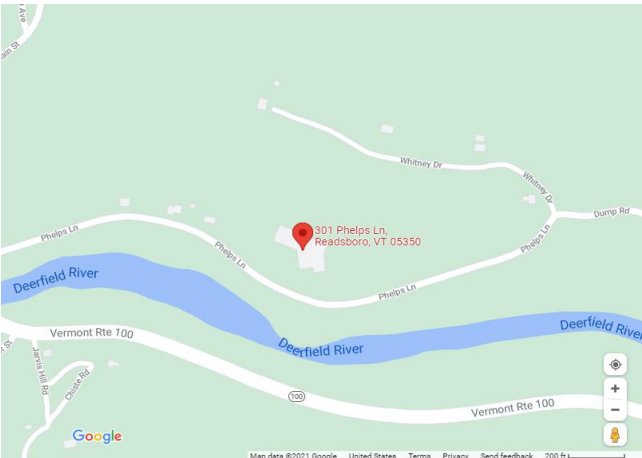
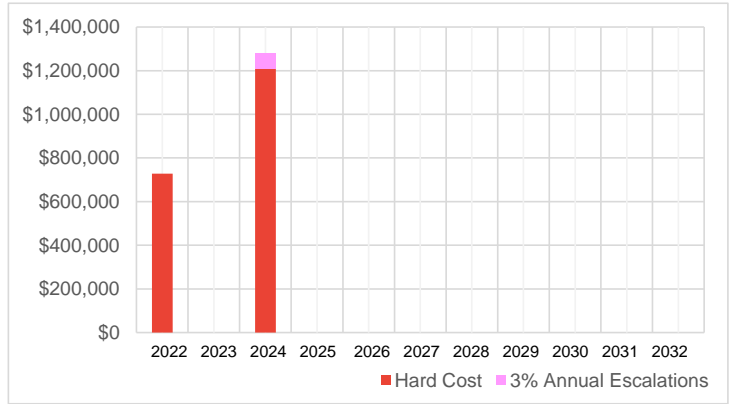


Value of Assets/GSF **\$88.45**



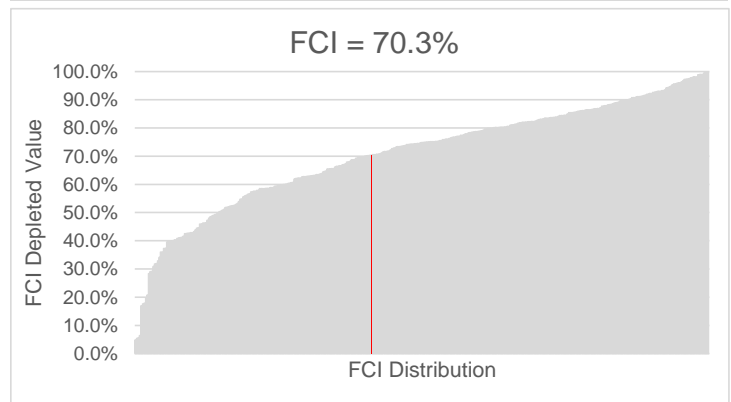
Site Plan - Google Earth

Projected Capital Planning Cash Flow



Location Plan - Google Maps

Facility Condition Index (FCI) Compared to Portfolio



(See Last Page for Explanation of Terms)

2022 School Facilities Inventory Report

Facility Name: **ESSEX WESTFORD EDUCATIONAL COMMUNITY UNIFIED UNION SD | SUMMIT STREET SCHOOL | 17 SUMMIT STREET, ESSEX JUNCTION 5452 - Elementary (PreK**

Respondent Information

Date/Time Completed **2021-12-13 - 2:32 PM**
 Respondent Name **Garry Scott**
 Respondent Title **Director of Facilities**
 Respondent Email **gscott@ewsd.org**
 Respondent Phone Number **(802) 857-7043**

Facility Information

School Type **Elementary (PreK thru 4)**
 Building Identification **Main Building**
 Stories **2**
 Building Area **38365 (Gross Square Footage - GSF)**
 Year Constructed **1951**
 Year of Last Major Renovation **2010**
 FCI (Depleted Value) **70.3%**

Environmental & Safety Issues

Hazardous Materials **No**
 Hazardous (HZD) Materials include -
 HZD Issues are -
 HZD Issues include -

Indoor Air Quality (IAQ) Issues **No**
 IAQ Issues include -
 IAQ Issues are -
 IAQ Issues include -

Fire or Life/Safety (FL/S) Issues **No**
 FL/S Issues are -

Other Risk Factors **No**
 Other Risk Factors include -
 Other Risk Factors are -

Handicap Accessibility (ADA) Issues

Handicap Accessibility (ADA) Issues **No**
 ADA Issues are **N/A**
 ADA Issues include **N/A**

Utilities - Adequacy

IT / Internet Service **Adequate**
 Building Wi-Fi Coverage **Adequate**
 Cellular Reception **Adequate**
 Water Service Pressure **Adequate**
 Natural Gas/Propane Pressure **Adequate**
 Electrical Capacity **Adequate**

2022 School Facilities Inventory Report

Facility Name: **ESSEX WESTFORD EDUCATIONAL COMMUNITY UNIFIED UNION SD | SUMMIT STREET SCHOOL | 17 SUMMIT STREET, ESSEX JUNCTION 5452 - Elementary (PreK)**

Building Envelope - Roof

Roof 1 is **Built-Up Roof or Modified Bitumen**

Covers	EUL	C-RUL	Cost / Unit	Quantity	Units	Total Value
100%	25	0	\$14.00 / SF	19,183	SF	\$268,555
Installed in 1997						



Roof 2 is -

Covers	EUL	C-RUL	Cost / Unit	Quantity	Units	Total Value
0%	-	N/A	- / -	-	-	\$0
Installed in -						

Roof 3 is -

Covers	EUL	C-RUL	Cost / Unit	Quantity	Units	Total Value
0%	-	N/A	- / -	-	-	\$0
Installed in -						

Roof 4 is -

Covers	EUL	C-RUL	Cost / Unit	Quantity	Units	Total Value
0%	-	N/A	- / -	-	-	\$0
Installed in -						

Building Envelope - Windows

Primary Window System **Window, Metal-Frame**

% of Windows That are this Type	EUL	C-RUL	Cost / Unit	Quantity	Units	Total Value
100%	30	3	\$60.00 / SF	9,208	SF	\$552,456
Installed in 1995						

Secondary Window System -

% of Windows That are this Type	EUL	C-RUL	Cost / Unit	Quantity	Units	Total Value
0%	-	N/A	- / -	-	-	\$0
Installed in -						

Services - Elevators

Primary Conveyance/Elevators **Elevator, Hydraulic, Machine/Controller/Cab**

Quantity of Stops	EUL	C-RUL	Cost / Unit	Quantity	Units	Total Value
2	30	3	\$25,000.00 / STOP	2	STOP	\$50,000
Installed in 1995						

Secondary Conveyance/Elevators -

Quantity of Stops	EUL	C-RUL	Cost / Unit	Quantity	Units	Total Value
0	-	N/A	- / -	0	-	\$0
Installed in -						

Services - Plumbing

Primary Plumbing System **Supply & Sanitary, Low Density (Includes Fixtures)**

Area of building served	EUL	C-RUL	Cost / Unit	Quantity	Units	Total Value
100%	40	13	\$7.00 / GSF	38,365	GSF	\$268,555
Installed in 1995						

Secondary Plumbing System -

Area of building served	EUL	C-RUL	Cost / Unit	Quantity	Units	Total Value
0%	-	N/A	- / -	-	-	\$0
Installed in -						

Services - Cooling - Central System

Primary Central Cooling System **None**

Area of building served	EUL	C-RUL	Cost / Unit	Quantity	Units	Total Value
0%	-	N/A	- / -	-	-	\$0
Installed in -						

Secondary Plumbing System -

Area of building served	EUL	C-RUL	Cost / Unit	Quantity	Units	Total Value
0%	-	N/A	- / -	-	-	\$0
Installed in -						

Services - Heating - Central System

Primary Heating System **Boiler(s)/System - Gas**

Area of building served	EUL	C-RUL	Cost / Unit	Quantity	Units	Total Value
100%	30	3	\$62.00 / MBH	1,096	MBH	\$67,961
Installed in 1995						

Secondary Heating System -

Area of building served	EUL	C-RUL	Cost / Unit	Quantity	Units	Total Value
0%	-	N/A	- / -	-	-	\$0
Installed in -						

2022 School Facilities Inventory Report

Facility Name: **ESSEX WESTFORD EDUCATIONAL COMMUNITY UNIFIED UNION SD | SUMMIT STREET SCHOOL | 17 SUMMIT STREET, ESSEX JUNCTION 5452 - Elementary (PreK)**

Services - HVAC Distribution

Primary HVAC Distribution System **Even Mix of Piped and Forced Air, 2-Pipe System**

Area of building served	100%	EUL	C-RUL	Cost / Unit	Quantity	Units	Total Value
Installed in	1995	30	3	\$14.00 / GSF	38,365	GSF	\$537,110

Secondary HVAC Distribution System -

Area of building served	0%	EUL	C-RUL	Cost / Unit	Quantity	Units	Total Value
Installed in	-	-	N/A	- / -	-	-	\$0

Services - Package Systems

Primary HVAC Package Unit & Splits **Even Mix of Package Units & Split Systems**

Area of building served	100%	EUL	C-RUL	Cost / Unit	Quantity	Units	Total Value
Installed in	1995	18	-9	\$1,900.00 / TON	153	TON	\$291,574

Secondary HVAC Package Unit & Splits -

Area of building served	0%	EUL	C-RUL	Cost / Unit	Quantity	Units	Total Value
Installed in	-	-	N/A	- / -	-	-	\$0

Services - Fire Suppression

Primary Fire Suppression System **Sprinkler System, Medium Density/Complexity**

Area of building served	100%	EUL	C-RUL	Cost / Unit	Quantity	Units	Total Value
Installed in	1995	40	13	\$5.00 / GSF	38,365	GSF	\$191,825

Secondary Fire Suppression System -

Area of building served	0%	EUL	C-RUL	Cost / Unit	Quantity	Units	Total Value
Installed in	-	-	N/A	- / -	-	-	\$0

Services - Fire Alarm System

Primary Fire Suppression System **Modern Addressable Fire Alarm System**

Area of building served	100%	EUL	C-RUL	Cost / Unit	Quantity	Units	Total Value
Installed in	1995	20	-7	\$3.00 / SF	38,365	SF	\$115,095

Secondary Fire Suppression System -

Area of building served	0%	EUL	C-RUL	Cost / Unit	Quantity	Units	Total Value
Installed in	-	-	N/A	- / -	-	-	\$0

Services - Security Systems

Primary Security & Low Volt System **Security & Low Voltage Systems - Average**

Area of building served	100%	EUL	C-RUL	Cost / Unit	Quantity	Units	Total Value
Installed in	2021	15	14	\$4.00 / GSF	38,365	GSF	\$153,460

Secondary Security & Low Volt System -

Area of building served	0%	EUL	C-RUL	Cost / Unit	Quantity	Units	Total Value
Installed in	-	-	N/A	- / -	-	-	\$0

Services - Electrical Distribution/Infrastructure

Electrical Distribution/Infrastructure **Main Distribution Panel w/Sub Panels and Generator/UPS - Medium Density**

Area of building served	100%	EUL	C-RUL	Cost / Unit	Quantity	Units	Total Value
Installed in	2010	40	28	\$22.00 / GSF	38,365	GSF	\$844,030

Services - Solar Power (PV)

Solar (Electric Generation) Provided **None**

Owned/Maintained by School -

Quantity of Panels 0

Installed in -

Value of Solar PV Panels: -

EUL	C-RUL	Cost / Unit	Quantity	Units	Total Value
-	N/A	- / -	-	-	\$0

Ancillary Structures

Ancillary Structures **Relocatable Building - Classroom/Office - Basic/Portable**

Total SF of Ancillary Structures	480	EUL	C-RUL	Cost / Unit	Quantity	Units	Total Value
Installed in	2008	15	1	\$110.00 / SF	480	SF	\$52,800

Secondary Ancillary Structures -

Total SF of Secondary Ancillary Structures	0	EUL	C-RUL	Cost / Unit	Quantity	Units	Total Value
Installed in	-	-	N/A	- / -	-	-	\$0

Additional Comments

2022 School Facilities Inventory Report

Facility Name: **ESSEX WESTFORD EDUCATIONAL COMMUNITY UNIFIED UNION SD | SUMMIT STREET SCHOOL | 17 SUMMIT STREET, ESSEX JUNCTION 5452 - Elementary (PreK**

Explanation of Terms

Projected Capital Planning Cash Flow	The estimated replacement costs of systems as they expire annually.
Facility Condition Index (FCI)	The cost -weighted depleted value of the building compared to the total value of all its systems; overall percent of building useful life consumed by years in service.
Total Value of Assets	The total estimated replacement cost of all the assets listed in the form.
Value of Assets per GSF	The Total Value of all Assets in the form divide by the Gross Square Footage (GSF) of the building.
Facility Condition Index (FCI) Compared to Portfolio	The Facility Condition Index (FCI) of the building overlayed on the chart of FCI's for all buildings in the portfolio. Indicated by a red line in the chart.
Calculated Remaining Useful Life(C-RUL)	The current number of remaining years a system may be expected to perform in designed service.
Expected Useful Life (EUL)	The total number of years a system can be expected to perform in designed service when new.
Gross Square Footage (GSF)	The total square footage contained within the building for all floors/levels.
Cost per Unit	The estimated base cost for a single unit of a system. When multiplied by Quantity results in the total system cost.
Quantity	The amount of a system present in a building. When multiplied by the Cost per Unit results in the total system cost.
Units	The expressed unit of measure for a given system (GSF, EACH, TON, etc).
Ancillary Structures	Buildings on site that are typically known as portables, relocatables or temporary buildings.